

# TRAINING SEMINAR ON THE USE OF THE IALA RISK MANAGEMENT TOOLBOX

IALA Headquarters, Saint-Germain-en-Laye, France

## INTRODUCTION

The IALA World-Wide Academy, will run a training seminar on the IALA Risk Management Toolbox - IWRAP Mk2; PAWSA and Simulation - from 20 – 24 May 2019 at IALA Headquarters in Saint Germain-en-Laye, France.

The seminar will provide an international overview of risk management stressing the importance of stakeholder liaison before demonstrating the value of the four IALA Risk Management Tools - IWRAP Mk 2; PAWSA, SIRA and Simulation in waterway planning. Participants will benefit from both theoretical and practical training delivered by world experts in different aspects of the toolbox.

## OBJECTIVES

This is the latest in the series of Risk Management Seminars set in the context of IALA Recommendation R1002 on Risk Management for Marine Aids to Navigation. It will be based on IALA Model Course - L1.3 - Aids to Navigation Manager Training Level 1 - Use of the IALA Risk Management Tools.

## STRUCTURE

The seminar aims to enable participants to experience the capability of the IALA Risk Management Toolbox. Specifically, it will:

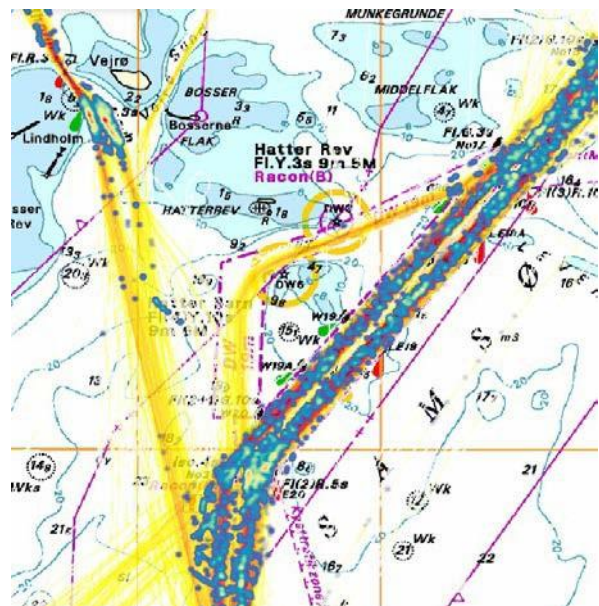
- describe the role of IALA; the importance of stakeholder liaison and the obligations placed on States under SOLAS Chapter V
- introduce the IALA Risk Management Toolbox
- explain the development, principles and use of IWRAP Mk2 before guiding participants through increasingly complex practical applications
- describe the development and use of PAWSA and its five Workbooks before demonstrating its use in a regional scenario
- explain the background to SIRA and demonstrate its application in a range of scenarios
- describe the use of simulators for ship applications and waterway design including modelling the most effective AtoN within that waterway

- describe the interaction between IALA Risk Management Tools in a regional scenario and the human resource and cost implications generated by selected risk mitigation measures
- use a panel of experts to consolidate an understanding of the Risk Management Toolbox

## PROGRAMME

The seminar is targeted at those involved in the design, marking and management of waterways. There is a limit of 40 participants, each of whom should provide their own Microsoft Windows enabled laptop with mouse. A copy of the IWRAP Mk2 software will be issued at the seminar and installed on participants' laptops at the start of the seminar. Participants must therefore have an "unlocked" laptop. Please note that IWRAP Mk 2 does not currently work with Apple computers.

The working language of the Seminar will be English





## VENUE

The Seminar will be held at IALA Headquarters, 10 rue des Gaudines, Saint-Germain-en-Laye, France.

## HOTELS

Information on hotels in Saint-Germain-en-Laye is available from the IALA website.

## CONTACT

For further information please contact the IALA World-Wide Academy: [academy@iala-aism.org](mailto:academy@iala-aism.org)

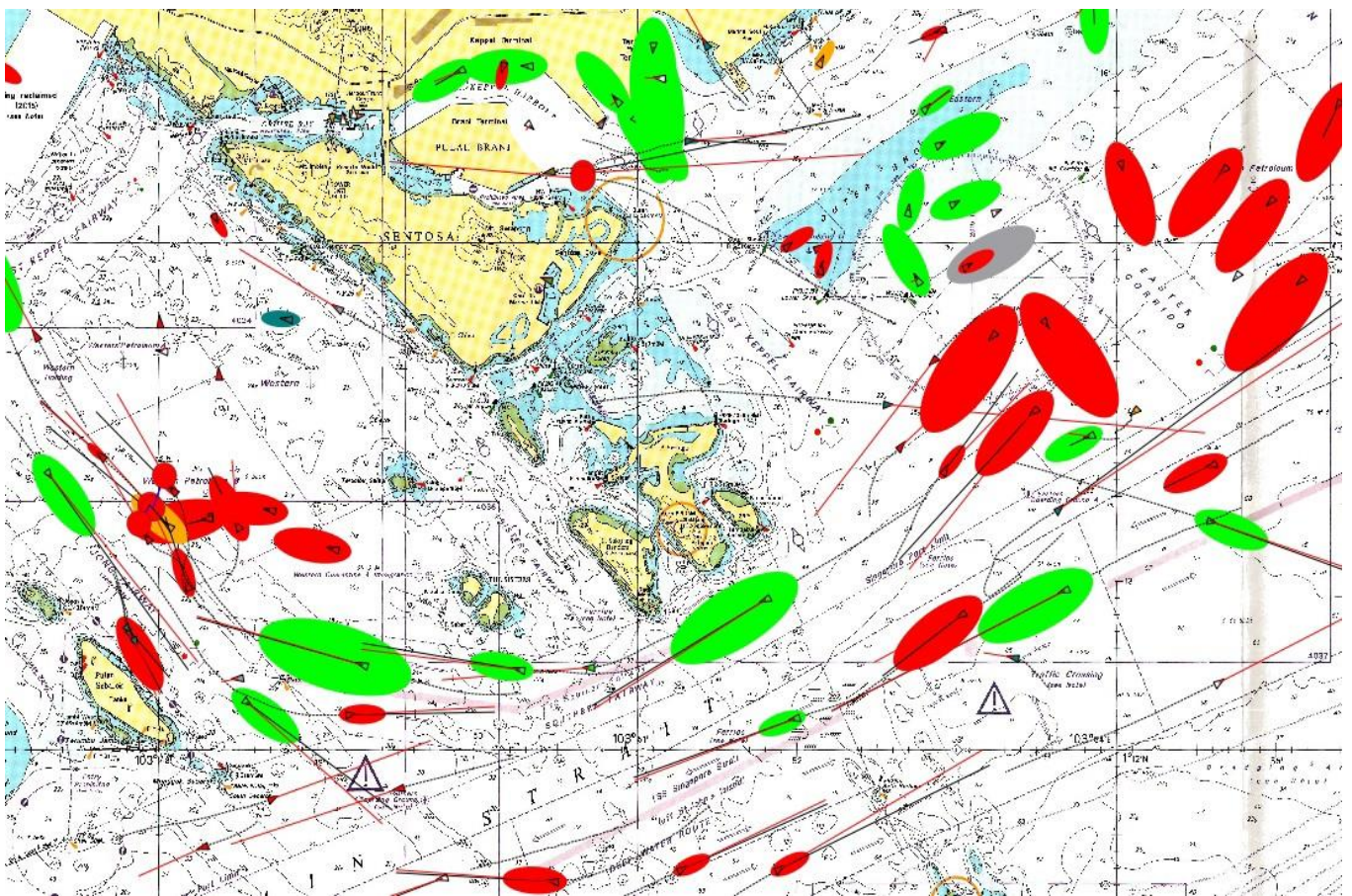
## REGISTRATION AND FEES

Online registration is available on the IALA website.

The fee for the seminar is **€1500**

The fee includes:

- Participation to all session
- All material presented at the seminar
- A full licence for IWRAP Mk2 for three months after the seminar
- A seminar reception
- All lunches and coffee/Tea breaks
- A seminar dinner



10, rue des Gaudines - 78100 Saint Germain en Laye, France  
Tél. +33 (0)1 34 51 70 01 - Fax +33 (0)1 34 51 82 05 - [contact@iala-aism.org](mailto:contact@iala-aism.org)  
[www.iala-aism.org](http://www.iala-aism.org)

International Association of Marine Aids to Navigation and Lighthouse Authorities  
Association Internationale de Signalisation Maritime



## PROVISIONAL PROGRAMME

Monday 20 <sup>th</sup> May 2019	
08:30 – 09:00	<b>Registration</b>
09:00 – 09:30	<b>Opening Ceremony</b>
09:30 – 10:30	<b>Introduction to IALA and the IALA WWA and international obligations under SOLAS</b>
11:00 – 12:00	<b>Introduction to the IALA Risk Management Toolbox</b> Introduction to navigation risk IALA Risk Management Toolbox Overview
13:30 – 14:15	<b>Regional Case Study of the use of IALA Risk Management Tools</b>
14:15 – 15:15	<b>IWRAP Mk 2</b> Development and Principles
15:15 – 16:00	Practical Applications of IWRAP Mk 2
16:30 – 18:00	<b>SIRA</b> Development and Principles SIRA Test Case
18:00 - 19:00	<b>Welcome Reception</b>
Tuesday 21 <sup>st</sup> May 2019	
09:00 – 10:30	<b>PAWSA Mk 2</b> Development and Principles
11:00 – 12:00	PAWSA Mk 2 - Use of workbooks
13:30 – 14:30	Test Case PAWSA Mk 2
14:30 – 16:00	Test Case PAWSA MK 2
16:30 – 18:00	<b>Use of Simulation in Risk Management</b>
Wednesday 22 <sup>nd</sup> May 2019	
09:00 – 10:30	<b>IWRAP Mk 2 Modelling</b> Creation of an IWRAP Mk 2 model using AIS data
11:00 – 12:00	<b>Overview of Maritime Simulators</b> Simulation Techniques in risk management
13:30 – 18:00	<b>Case Study - Simulation</b>
19:30 – 21:30	<b>Seminar Dinner</b>
Thursday 23 <sup>rd</sup> May 2019	
09:00 – 10:30	<b>Advanced IWRAP Mk 2 modelling (1)</b>
11:00 – 12:00	Advanced IWRAP Mk 2 modelling (2)
13:30 – 15:30	Final IWRAP Mk 2 modelling
15:30 – 16:30	<b>Complementary use of IALA Risk Management Tools</b> Regional Case Study
16:30 – 18:00	<b>Comparison between models</b> IWRAP Case Study Malacca Strait
Friday 24 <sup>th</sup> May 2019	
09:00 – 10:30	<b>Discussion on the IALA Risk Management Toolbox</b> Complementary use of IALA Risk Management Tools, discussion and conclusions
11:00 – 12:30	<b>Closing Ceremony</b> Issue of Certificates and closing remarks





**REGISTRATION FROM**

**TRAINING SEMINAR ON THE USE OF THE IALA RISK MANAGEMENT TOOLBOX**

IALA Headquarters,  
Saint-Germain-en-Laye, France

**IALA Risk Management Toolbox:**

- IALA Waterways Risk Assessment Program (IWRAP MK 2);
- Ports and Waterways Safety Assessment (PAWSA MK 2);
- Simplified IALA Risk Assessment (SIRA);
- Simulation Tools.

**Participant's details**

Surname (family name): \_\_\_\_\_

First name (given name): \_\_\_\_\_

Title (Mr. /Mrs. /Dr., etc.): \_\_\_\_\_

Organisation or company: \_\_\_\_\_

Address: \_\_\_\_\_

\_\_\_\_\_

Country: \_\_\_\_\_

Phone (incl. country code): \_\_\_\_\_

Mobile (incl. country code): \_\_\_\_\_

E-mail: \_\_\_\_\_

Dietary requirements (please specify): \_\_\_\_\_

I agree to my contact details being provided in the final report of the workshop:

Yes  No

I need an invitation letter from TNPA for visa purposes:

Yes  No

I will be accompanied by: \_\_\_\_\_

\_\_\_\_\_

\_\_\_\_\_

\_\_\_\_\_

**Payment details**

by enclosed cheque or bank draft in EUROS

by VISA or MASTERCARD

N°: \_\_\_\_\_

Expiry date: \_\_\_\_\_

Holder's name: \_\_\_\_\_

Total to be charged: \_\_\_\_\_

Signature \_\_\_\_\_

by bank transfer on receipt of an invoice

Other requirements (please specify): \_\_\_\_\_

\_\_\_\_\_

\_\_\_\_\_

\_\_\_\_\_

Online payment is available on the website: [www.iala-aism.org](http://www.iala-aism.org) . Under Calendar / Book now.

Your login and password are required in these fields.

**CANCELLATION POLICY**

All cancellations must be sent by e-mail to [contact@iala-aism.org](mailto:contact@iala-aism.org)

A refund in full of the registration fee will only be provided if notification is given at least one week prior to the event. Otherwise, a cancellation charge of 50% will be applied. Name changes will be accepted.

In case of a no-show, 100% of the registration fee will be charged.