

## IALA DTEC WG3 Intersessional Meeting in August 2026

1. We cordially invite you to the IALA DTEC WG3 Intersessional Meeting in August 2026, hosted by Dalian Maritime University (DMU) and Maritime Safety Administration of the People's Republic of China (China MSA) which will be held in Dalian, China. Dalian is located at the southern tip of Northeast China. Surrounded by the sea on three sides, it is a modern coastal city known for its scenic beauty, openness, inclusiveness, and vitality. As one of China's important port cities and a key gateway for opening up to the outside world, Dalian enjoys convenient transportation, a pleasant urban environment, and a high degree of internationalization.



### 2. Schedule:

- Tuesday, August 18, 2026 - 10:00-17:00 (UTC+8)
- Wednesday, August 19, 2026 - 9:00-17:00 (UTC+8)
- Thursday, August 20, 2026 - 9:00-17:00 (UTC+8)
- Friday, August 21, 2026 - 9:00-17:00 (UTC+8)
- Saturday, August 22, 2026 - 9:00-13:00 (UTC+8)

### 3. Meeting Venue: 34th Floor, Tower A, Hi-Chance Science and Technology Building

- Directions: [34th Floor, Tower A, Hi-Chance Science and Technology Building - Google Maps](#)



#### 4. Accommodation Recommendations:

- Hi-Chance (Dalian) Science and Technology Center: Special rates are available at the hotel next to the meeting venue (about 100 meters). Please email to Shuaiheng Huai (huaishuaiheng@dlnu.edu.cn) with the following information in advance, and we will reserve a special rate for you. Payment can be made on-site at check-in.
  - Room Type: Scenic View Twin Room or Double Room (approximately RMB 800 per night)
  - Check-in / Check-out Time: Check-in after 14:00 / Check-out before 12:00
  - Breakfast (Full buffet - RMB 78 per day; only one breakfast is included per room)

- Other nearby accommodations:

- Hampton by Hilton Dalian High-Tech Zone ([Hampton by Hilton Dalian High-Tech Zone](#)). About 800 meters from the meeting venue.

## 5. Directions to the Meeting Venue

Dalian is served by direct flights from major Asian cities such as Beijing, Shanghai, Tokyo, and Seoul, making it easily accessible for international participants.

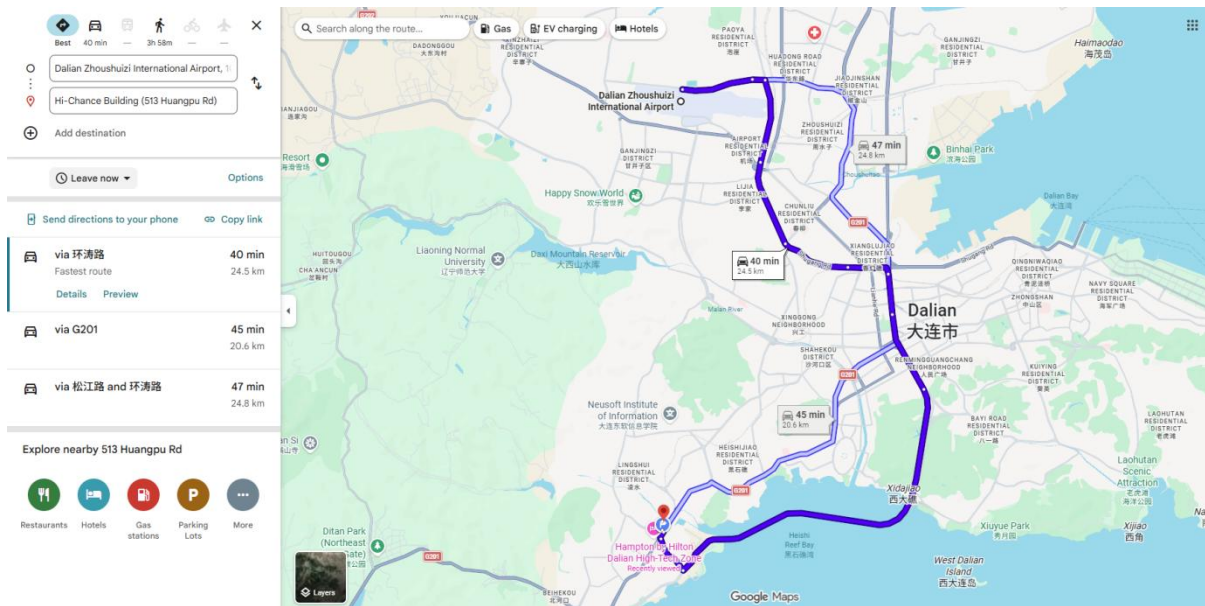


- [Dalian Zhoushuizi International Airport → 34th Floor, Tower A, Hi-Chance Science and Technology Building]

[Dalian Zhoushuizi International Airport to the Meeting Venue - Google Maps](#)

A. By Taxi

This is the most convenient option. The journey takes about 40 minutes, and the fare is approximately RMB 40.



### B. By Metro

You may take Metro Line 2 from the airport station, transfer to Metro Line 1 at Xi'an Road Station, and get off at Dalian Maritime University Station. After exiting from Exit C, it is about a 500-meter walk to 34th Floor, Tower A, Hi-Chance Science and Technology Building. The whole trip takes approximately 1 hour (RMB 4).



### 6. Directions to the Hotel

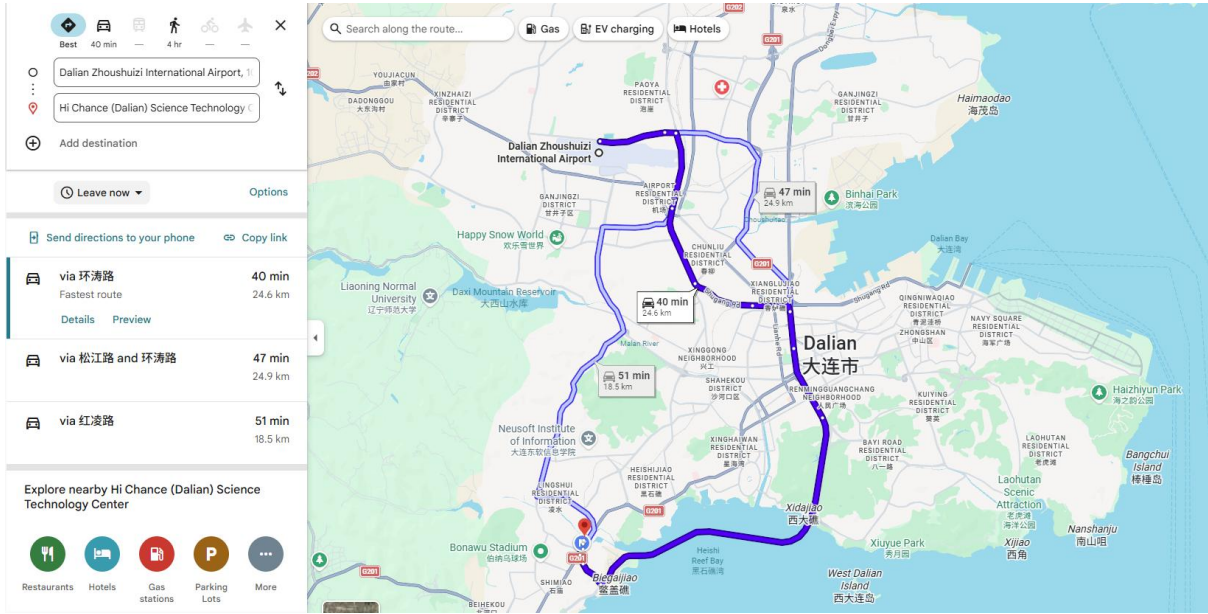
- [Dalian Zhoushuizi International Airport → Hi-Chance (Dalian) Science and Technology Center]

Public transportation options include taxis and metro.

[Dalian airport to Hi-Chance Science and Technology Center - Google Maps](#)

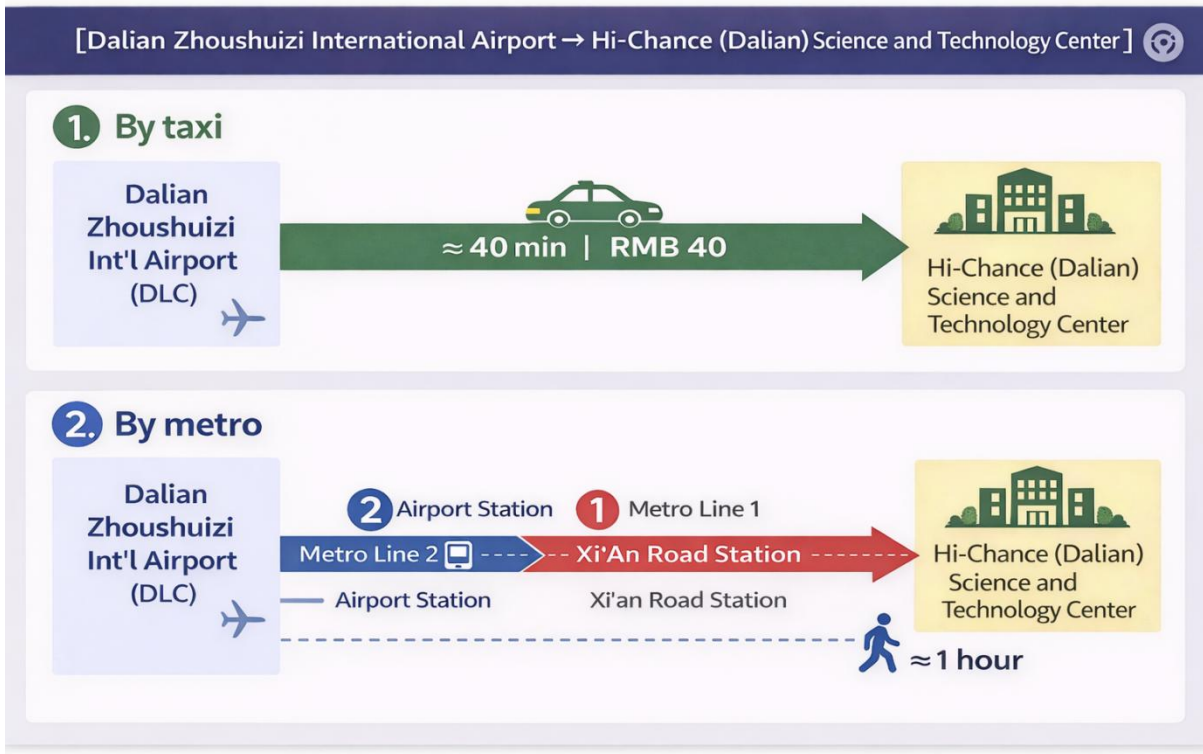
A. By Taxi

The journey takes about 40 minutes, and the fare is approximately RMB 40. The Hi-Chance (Dalian) Science and Technology Center is located at No. 507 Huangpu Road, Dalian High-tech Zone (next to the North Gate of Dalian Maritime University).



B. By Metro

You may take Metro Line 2 from the airport station, transfer to Metro Line 1 at Xi'an Road Station, and get off at Dalian Maritime University Station. After exiting from Exit C, it is about a 50-meter walk to the venue. The whole trip takes approximately 1 hour (RMB 4).



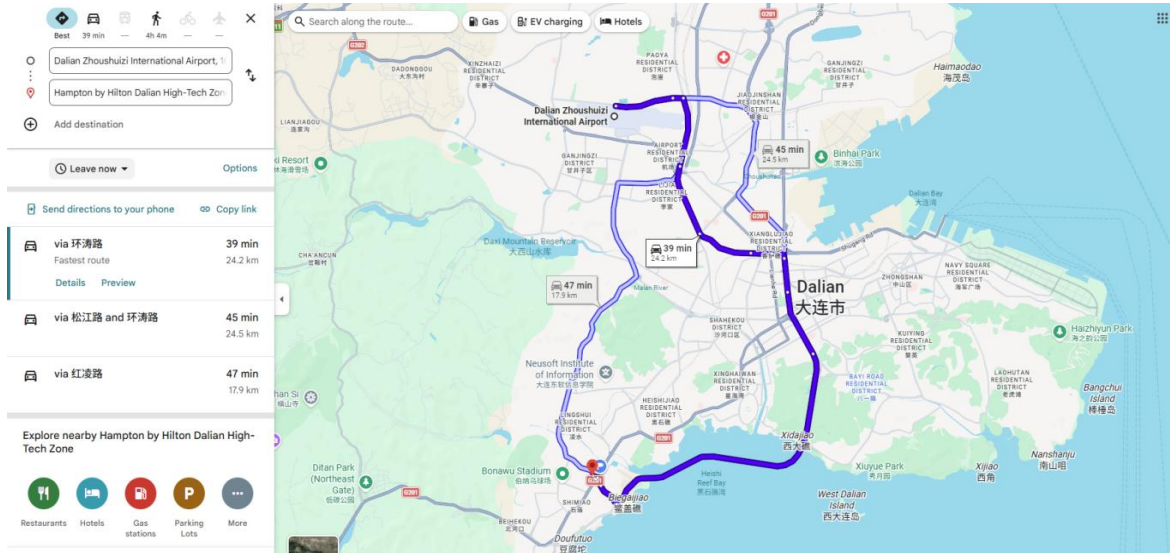
- [Dalian Zhoushuizi International Airport → Hampton by Hilton Dalian High-Tech Zone]

Public transportation options include taxis and metro.

[Dalian Airport to Hampton by Hilton Dalian High-Tech Zone - Google Maps](#)

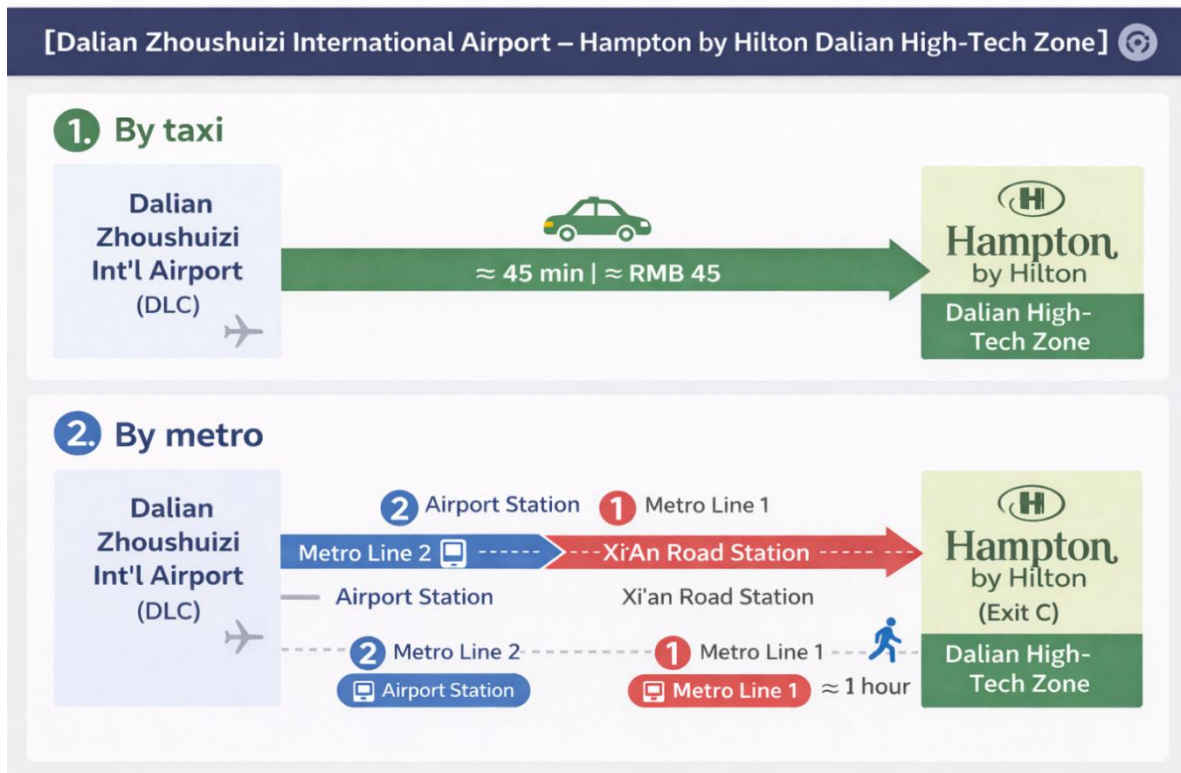
A. By Taxi

The journey takes about 45 minutes, and the fare is approximately RMB 45.



B. By Metro

You may take Metro Line 2 from the airport station, transfer to Metro Line 1 at Xi'an Road Station, and get off at Dalian Maritime University Station. After exiting from Exit C, it is about a 500-meter walk to the hotel. The whole trip takes approximately 1 hour (RMB 4).

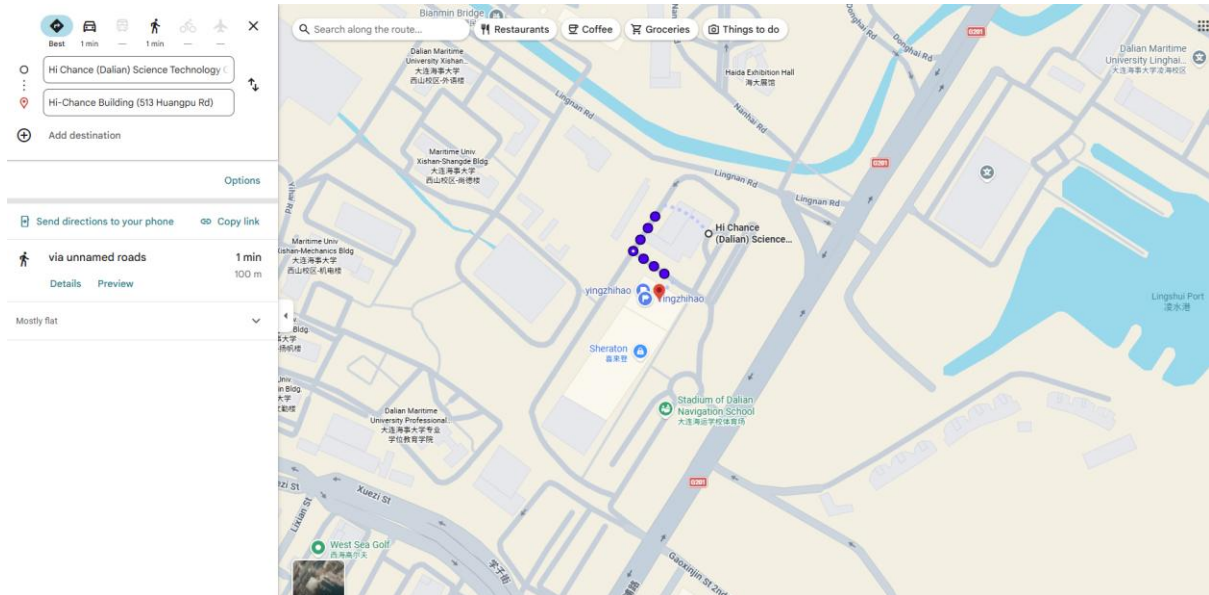


## 7. Directions from the Hotel to the Meeting Venue

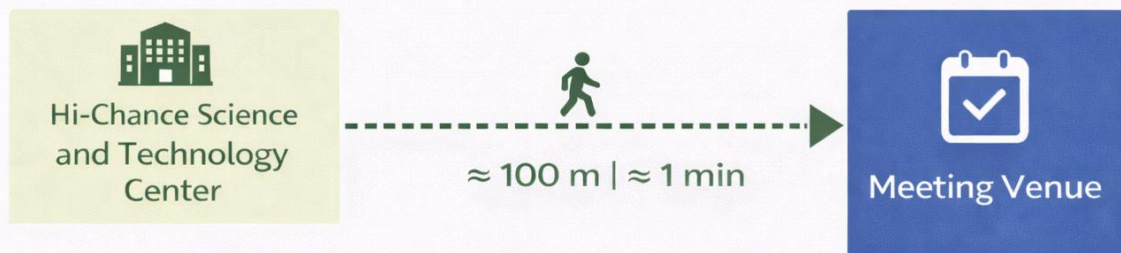
- [Hi-Chance (Dalian) Science and Technology Center → the Meeting Venue]

The distance is about 100 meters, which takes approximately 1 minute on foot.

[Hi-Chance \(Dalian\) Science and Technology Center to the Meeting Venue - Google Maps](#)



### [Hi-Chance (Dalian) Science and Technology Center to the Meeting Venue]

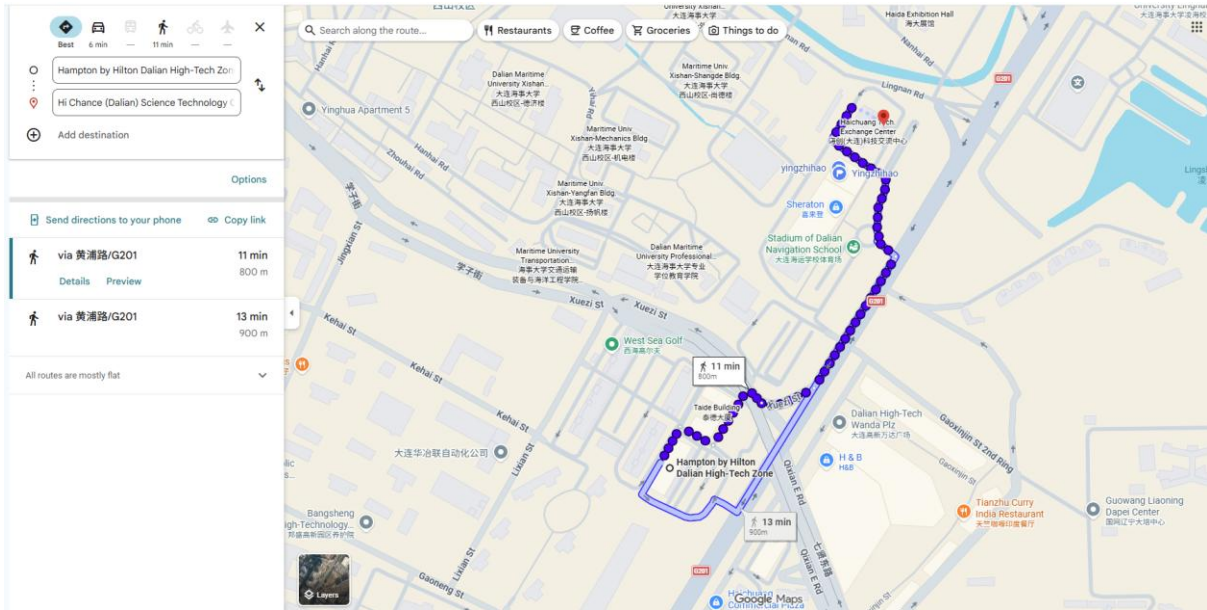


Walk downstairs and continue for about 100 meters → The distance is about 100 meters, which takes approximately 1 minute on foot.

- [Hampton by Hilton Dalian High-Tech Zone → the Meeting Venue]

The distance is about 800 meters, which takes approximately 11 minutes on foot.

[Hampton by Hilton Dalian High-Tech Zone to the Meeting Venue - Google Maps](#)



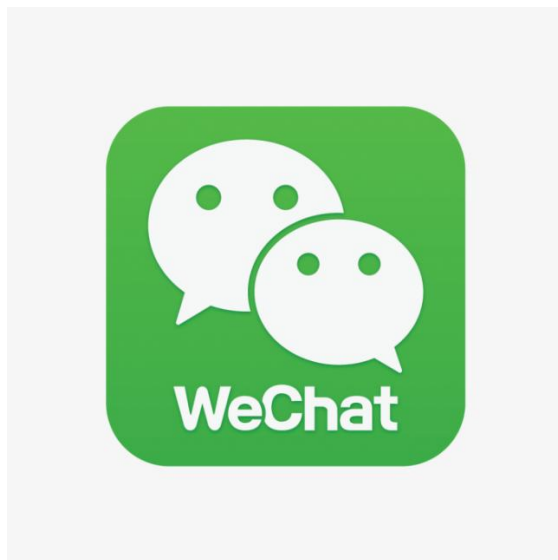
## [Hampton by Hilton Dalian High-Tech Zone to the Meeting Venue]



Walk downstairs and continue for about 800 meters → The distance is about 800 meters, which takes approximately 11 minutes on foot.

### 8. Apps recommended for pre-installation

It is highly recommended that you install **WeChat** on your mobile device prior to China. It is an all-in-one app that handles payments, social networking, food delivery, and translation. You can link your credit card or even scan QR codes using your overseas e-wallets. Please download the app from official stores (App Store / Google Play) and link your overseas bank card (Visa, Mastercard, Amex, etc.) before you depart. This will help you avoid potential issues with network connectivity or account registration after you arrive. Upon installing WeChat, you are welcome to scan the QR code to add Shuaiheng Huai as a contact for seamless communication.



### 9. Important Reminder

- Colleagues intending to attend the meeting in Dalian are requested to send their details to Shuaiheng Huai by **May 20th**, including name, gender, nationality, affiliation, and title.
- Additionally, please be advised that as the meeting coincides with the peak tourist season, hotel availability is extremely limited. Therefore, those who wish to stay at the Hi-Chance (Dalian) Science and Technology Center should also contact Shuaiheng Huai by **May 20th** so that to facilitate advance room reservations.
- Finally, for colleagues requiring an official invitation letter, please send the following details to Shuaiheng Huai: full name, gender, nationality, date of birth, passport number, entry and exit dates, address, affiliation, phone number, and email address. This information is necessary to issue the official invitation letter from Dalian Maritime University.

For any inquiries, please contact Shuaiheng Huai ([huaishuaiheng@dlmu.edu.cn](mailto:huaishuaiheng@dlmu.edu.cn)).